



**48" Square Recycled Plastic Table with (4) Attached Seats - Portable.**

- 250 lbs.
- Dim: 48" Square Top x 30"H.
- Table top and seats are made with 2" x 10" recycled plastic and top with 1 5/8" dia. hot dipped galvanized powdercoated frame.
- All holes are predrilled and countersunk for plastic lumber.
- Includes a UV protectant.
- Maintenance free.
- Table top and seats available in cedar, gray, green and brown with black base.
- Mounting clamps available.
- With umbrella hole.
- Some assembly required.

**Item #:** JP PB4SQPIC

## Resinwood Slat Colors



Cedar



Green



Gray

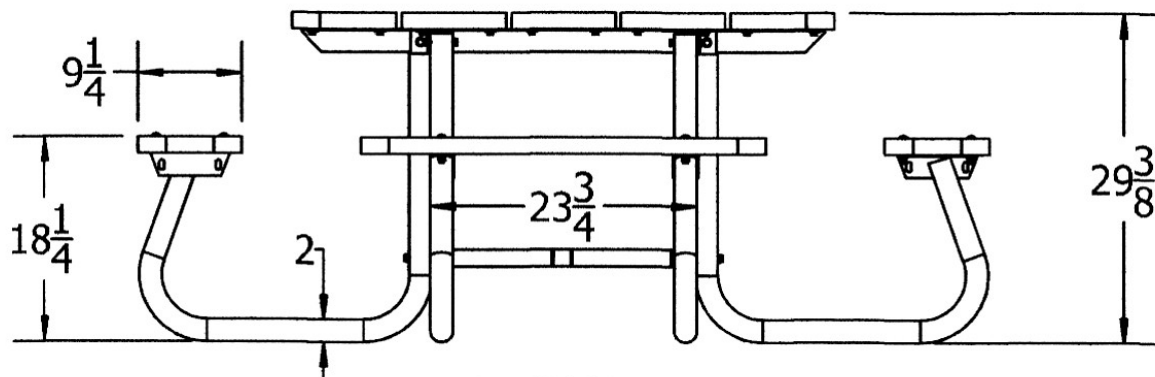


Brown

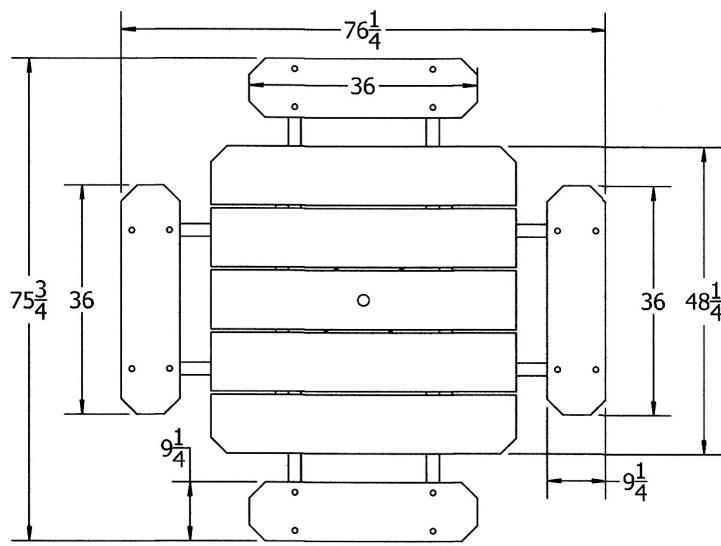


National Outdoor Furniture  
1210 W. Main Street #296  
Riverhead, N.Y. 11901

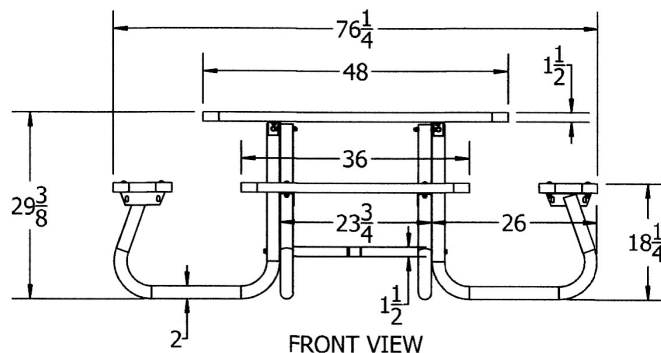
PHONE (888) 663-4621  
E-MAIL [nofinc1@gmail.com](mailto:nofinc1@gmail.com)  
[www.nationaloutdoorfurniture.com](http://www.nationaloutdoorfurniture.com)



SIDE VIEW



TOP VIEW



FRONT VIEW



National Outdoor Furniture  
1210 W. Main Street #296  
Riverhead, N.Y. 11901

PHONE (888) 663-4621  
E-MAIL [nofinc1@gmail.com](mailto:nofinc1@gmail.com)

[www.nationaloutdoorfurniture.com](http://www.nationaloutdoorfurniture.com)