



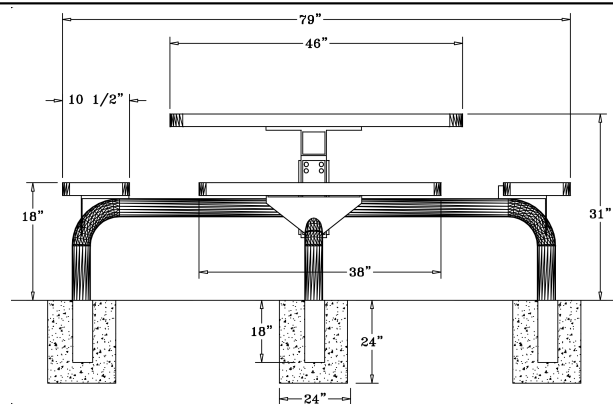
46" x 57" Regal Web Table with (3) Attached Seats - ADA/Inground Mount

254 lbs.

- Top and seats are made with polyethylene coated $\frac{3}{4}$ " #9 expanded metal.
- Zinc coated, galvanized, powder coated 4" pedestal.
- With umbrella hole.
- Some assembly required.

Available in surface mount version.

Item #: WC WSQ46ADA-3IG



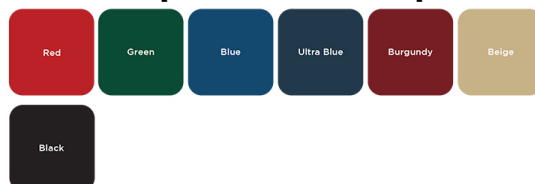
Textured Polyethylene Colors



Powder Coat Gloss Finishes



Thermoplastic Color Options



National Outdoor Furniture
1210 W. Main Street #296
Riverhead, N.Y. 11901

PHONE (888) 663-4621
E-MAIL nofinc1@gmail.com
www.nationaloutdoorfurniture.com